

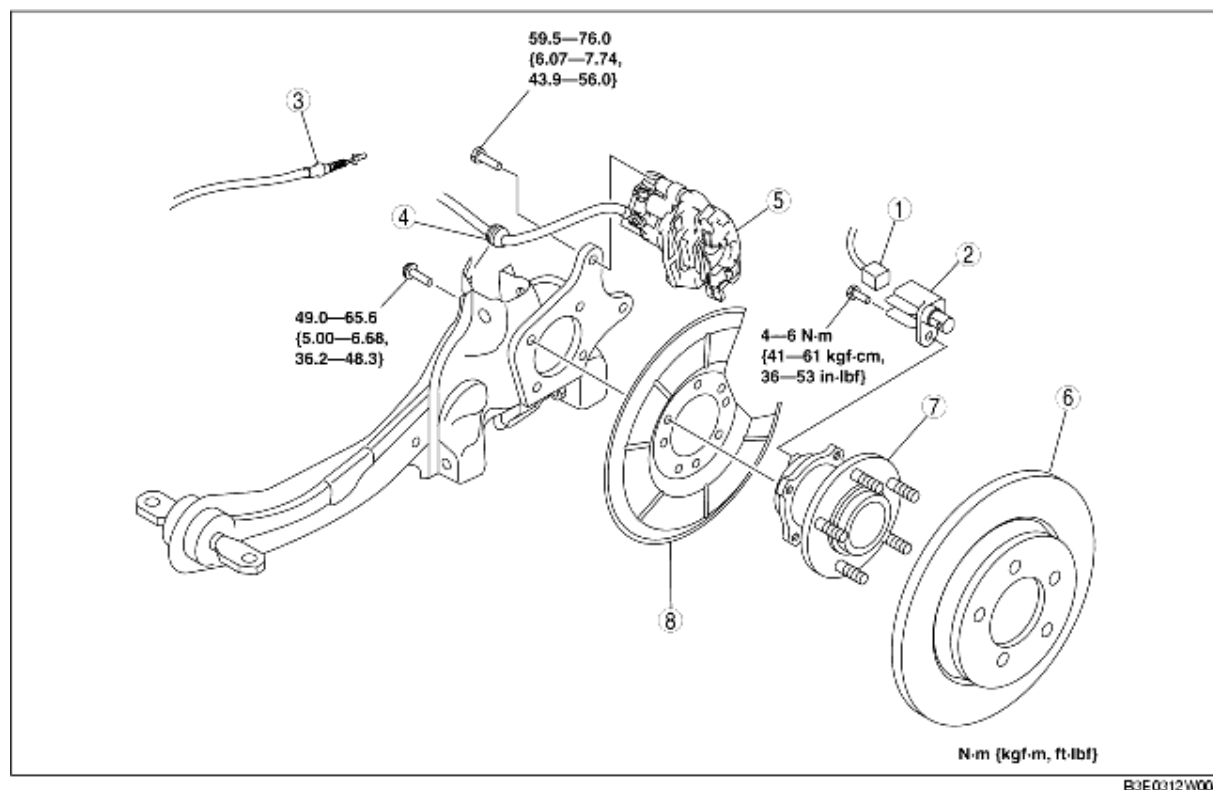
WHEEL HUB COMPONENT REMOVAL/INSTALLATION

B3E031205060W02

Caution

• Performing the following procedures without first removing the ABS wheel-speed sensor may possibly cause an open circuit in the wiring harness if it is pulled by mistake. Before performing the following procedures, disconnect the ABS wheel-speed sensor connector (body side) and fix the wiring harness to an appropriate place where it will not be pulled by mistake while servicing the vehicle.

1. Remove in the order indicated in the table.
2. Install in the reverse order of removal.



B3E0312W004

1	ABS wheel-speed sensor connector
2	ABS wheel-speed sensor
3	Parking brake cable
4	Brake hose
5	Brake caliper component (See Brake Caliper Component Removal Note .)
6	Disc plate
7	Wheel hub component
8	Dust cover

Brake Caliper Component Removal Note

1. Remove the brake caliper component from the trailing link and suspend it out of the way using a cable.